

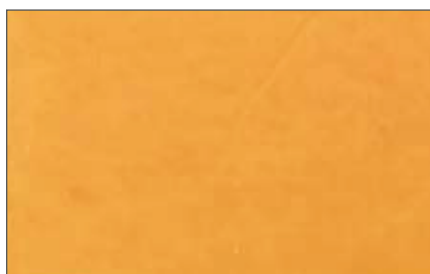
MANUSTUCCO

MANUSTUCCO è lo spatolato veneziano composto da grassello di calce, pigmenti naturali inalterabili e da particolari additivi vegetali finemente selezionati.

MANUSTUCCO is the Venetian spatolato comprising grassello lime, natural pigments unchangeable series of phases and special plant finely selected additives.



Manustucco 544-2 color



Manustucco 540-2 color

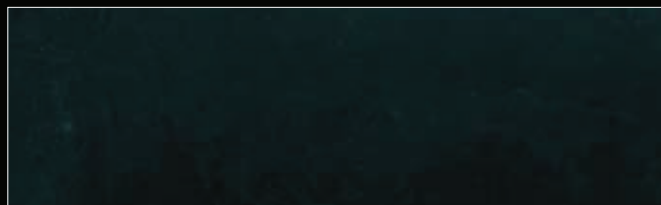


Manustucco 315-2 color

Tutti i colori riprodotti sono da ritenersi puramente indicativi
All colors reproduced in this shade are indicative



MANUSTUCCO 544 - 2 color



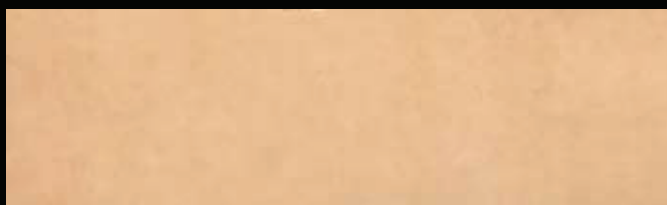
MANUSTUCCO nero puro



MANUSTUCCO 544 - 1 color



MANUSTUCCO 328 - 1 color



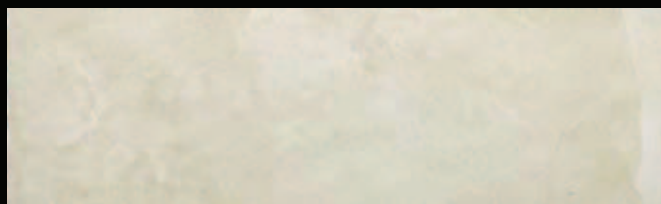
MANUSTUCCO 317 - 2 color



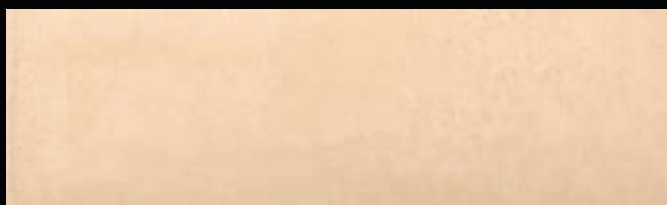
MANUSTUCCO 536 - 1 color



MANUSTUCCO 325 - 2 color



MANUSTUCCO 302 - 2 color



MANUSTUCCO 325 - 1 color

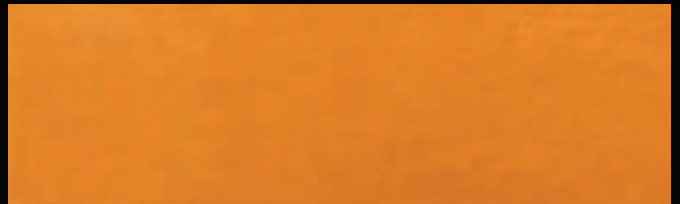


MANUSTUCCO bianco puro

Tutti i colori riprodotti sono da ritenersi puramente indicativi
All colors reproduced in this shade are indicative



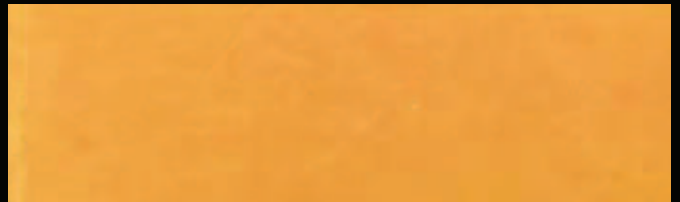
MANUSTUCCO 548 - 1 color



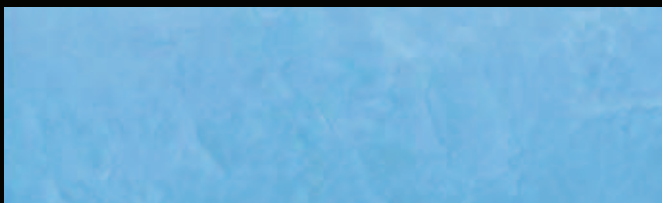
MANUSTUCCO 541 - 2 color



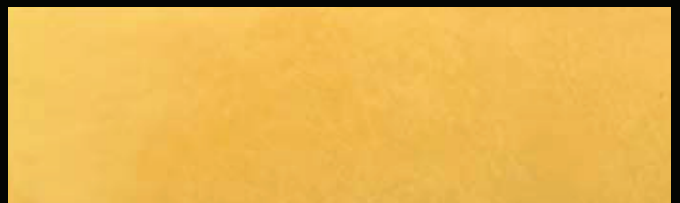
MANUSTUCCO 547 - 2 color



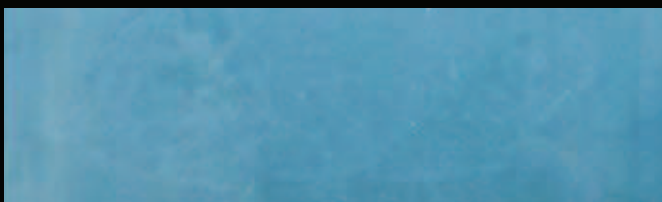
MANUSTUCCO 540 - 2 color



MANUSTUCCO 330 - 2 color



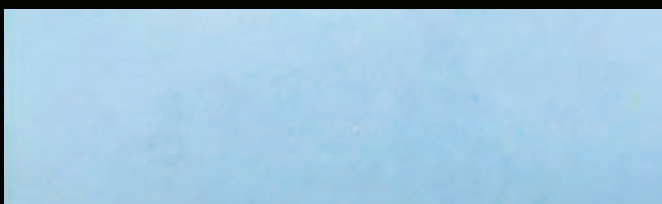
MANUSTUCCO 539 - 1 color



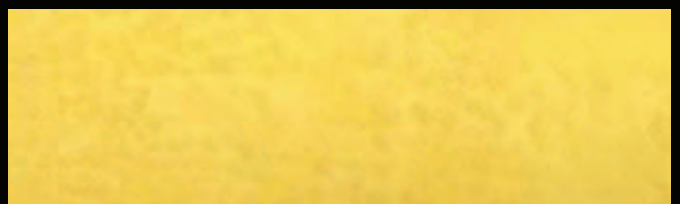
MANUSTUCCO 315 - 2 color



MANUSTUCCO 538 - 2 color

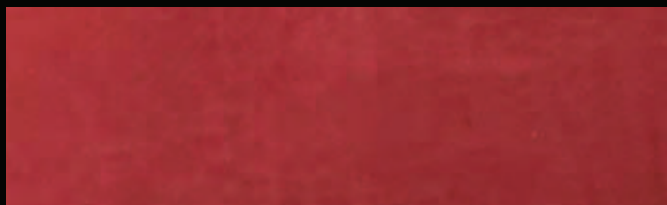


MANUSTUCCO 308 - 2 color



MANUSTUCCO 537 - 1 color

Tutti i colori riprodotti sono da ritenersi puramente indicativi
All colors reproduced in this shade are indicative



MANUSTUCCO 543 - 2 color



MANUSTUCCO 546 - 2 color



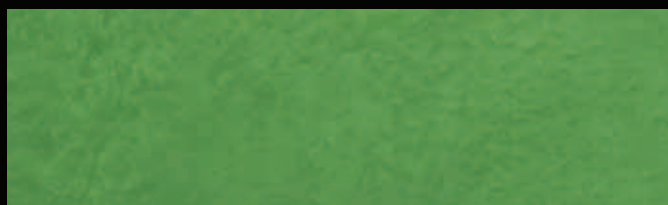
MANUSTUCCO 542 - 2 color



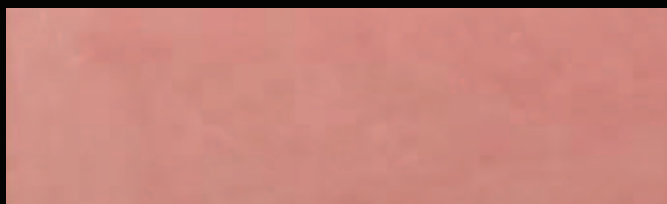
MANUSTUCCO 313 - 4 color



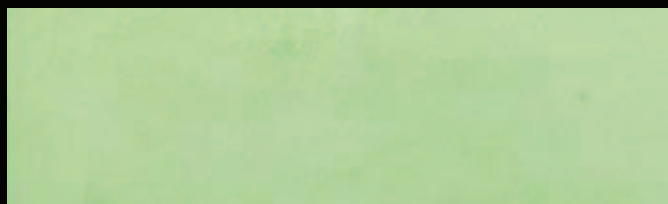
MANUSTUCCO 322 - 2 color



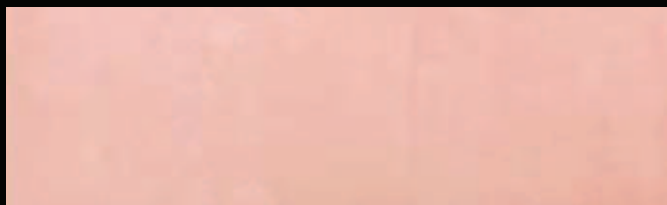
MANUSTUCCO 545 - 2 color



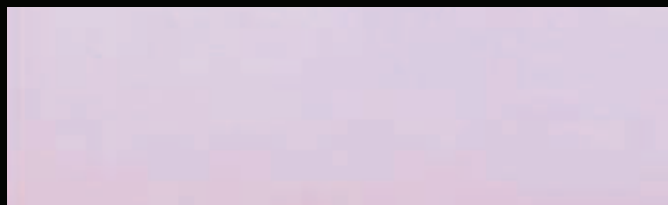
MANUSTUCCO 314 - 2 color



MANUSTUCCO 327 - 2 color



MANUSTUCCO 321 - 2 color



MANUSTUCCO 329 - 2 color

MANUSTUCCO

Informazioni tecniche

MANUSTUCCO è lo spatolato veneziano composto da grassello di calce, pigmenti naturali inalterabili e da particolari additivi vegetali finemente selezionati.

MANUSTUCCO svolge un'azione fungicida e disinfettante, ha un'ottima resistenza agli alcali e un elevato indice di traspirabilità. Può essere applicato su intonaci grezzi o civili, vecchie pitture non sfarinanti e pietre porose.

PREPARAZIONE

Pulire accuratamente le superfici da trattare e applicare una mano di fissativo stabilizzante MANUPRIMER.

Scelto il colore COLOR, versatelo nella quantità desiderata nel MANUSTUCCO, quindi miscelare accuratamente con un miscelatore a frusta. Applicare un primo strato di MANUSTUCCO a rasare. Applicare un secondo strato di MANUSTUCCO a rasare.

Se si vuole ottenere l'effetto lucido, si consiglia durante la stesura del terzo e ultimo strato di applicare aree di circa 1/2 mq di MANUSTUCCO, quindi entro 30 secondi circa, schiacciare il prodotto con una spatola inox arrotondata scarica e pulita, poi continuare con lo stesso metodo fino a completamento lavoro.

ATTREZZI

Spatola Inox

CONFEZIONI

Latte da kg 8 - kg 24

RESA

1 kg = 1 mq ca. (3 mani)

Made in Italy 100%

Technical information

MANUSTUCCO is the Venetian spatolato comprising grassello lime, natural pigments unchangeable series of phases and special plant finely selected additives.

MANUSTUCCO plays a fungicide and disinfectant action, has excellent resistance to alkali and a high level of breathability.

PREPARATION

Thoroughly clean areas to be treated and apply a layer of fixative stabilizing MANUPRIMER.

Chosen COLOR, pour in desired quantity in MANUSTUCCO, then mix carefully with a mixer to whip. Apply a first layer of MANUSTUCCO to smooth. Apply a second layer of Manustucco to smooth.

To obtain a shiny effect, it is advisable when the third and final layer is applied, spreading in areas of about 1/2 square meter of MANUSTUCCO, then within 30 seconds crush the product with a steel rounded clean spatula, then apply the same method for completing the work.

TOOLS

Spatula Inox

PACKAGES

Cans kg 8 - kg 24

YIELD

1 kg = 1 mq about (3 layers)

Made in Italy 100%