

LUNA

LUNA è una velatura decorativa acrilica a base d'acqua per interni proposta nelle varianti LUNA ARGENTO e LUNA ORO.

LUNA è la rivoluzionaria decorazione murale che, permette di ottenere un effetto satinato/lucido di incredibile eleganza e raffinata bellezza.

La particolare formula tecnologica, ripropone le sembianze di pregiati tessuti di antica fattura che ben si adattano a qualsiasi tipo di arredamento, dal classico al moderno.

Accarezzando LUNA sarete piacevolmente avvolti da una sensazione calda e morbida.

LUNA is a washable acrylic water based proposed in the variants LUNA ARGENTO (SILVER) and LUNA ORO (GOLD).

LUNA, is the revolutionary wall decoration that allows you to obtain a shining effect of unbelievable elegance and sophisticated beauty.

The particular technological formula repropose the aspect of valuable tissues of ancient manufacture, which well suit to every kind of furniture, from classic to modern.

By stroking LUNA you will be pleasantly wrapped by a warm and soft sensation.



Bosco: Luna Oro 550-3 color

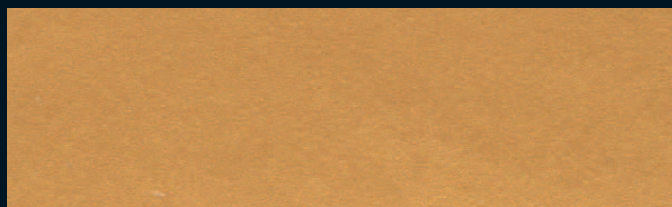


Noce: Luna Oro
+ 312-3 color + 328-1 color



Marina: Luna Argento
+ 308-1 color + 315-1 color

Tutti i colori riprodotti sono da ritenersi puramente indicativi
All colors reproduced in this shade are indicative



LUNA ORO

Luna Oro puro



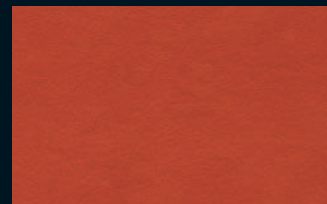
Bosco: Luna Oro
+ 550-3 color



Loden: Luna Oro
+ 547-2 color + 328-1 color



Edera: Luna Oro
+ 547-2 color + 328-1 color



Fuoco: Luna Oro
+ 542-2 color



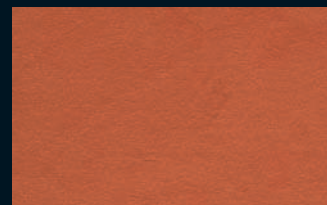
Cioccolato: Luna Oro
+ 542-1 color + 550-2 color



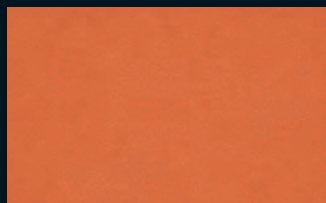
Noce: Luna Oro
+ 312-3 color + 328-1 color



Renna: Luna Oro
+ 329-3 color



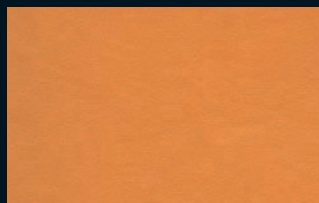
Colorado: Luna Oro
+ 541-1 color + 312-3 color



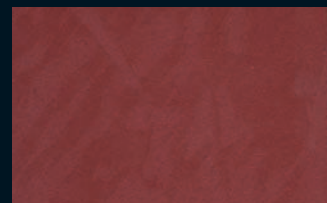
Arancio: Luna Oro
+ 541-1 color



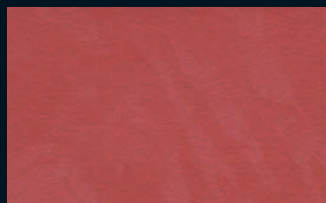
Palude: Luna Oro
+ 539-1 color + 330-1 color



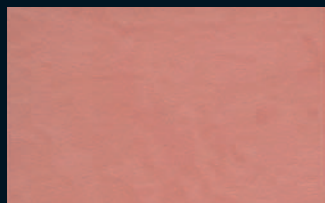
Mandarino: Luna Oro
+ 540-1/2 color



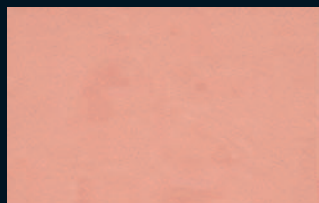
Granata: Luna Argento
+ 543-3 color



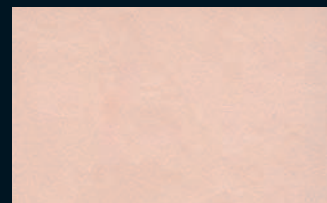
Rosso: Luna Argento
+ 542-2 color



Antico: Luna Argento
+ 541-1 color + 322-2 color

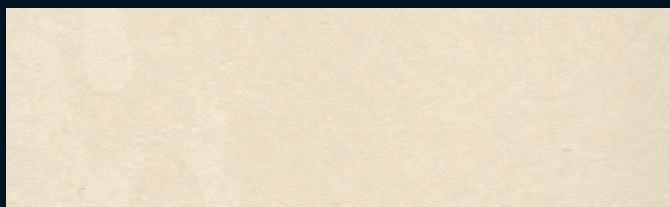


Tramonto: Luna Argento
+ 541-1/2 color



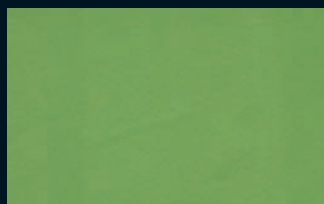
Rosa: Luna Argento
+ 318-1 color

Tutti i colori riprodotti sono da ritenersi puramente indicativi
All colors reproduced in this shade are indicative

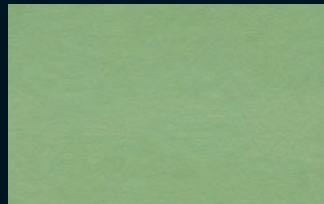


Luna Argento puro

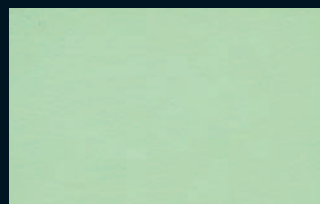
LUNA ARGENTO



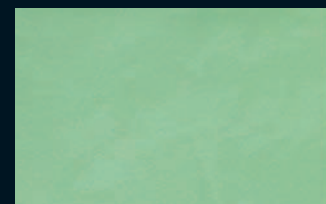
Menta: Luna Argento
+ 537-2 color + 545-1 color



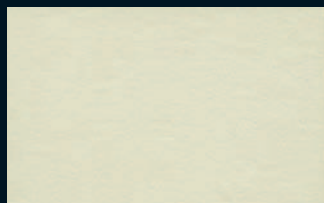
Oliva: Luna Argento
+ 327-2 color + 324-2 color



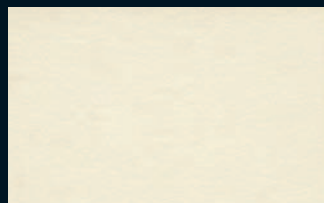
Verza: Luna Argento
+ 320-3 color



Reno: Luna Argento
+ 310 - 2 color + 327 - 1 color



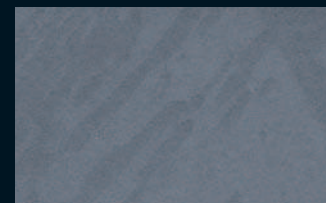
Adige: Luna Argento
+ 310-1 color + 311-1 color



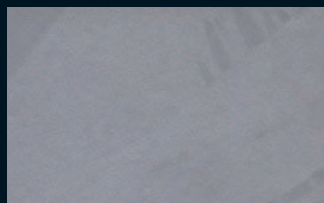
Patagonia: Luna Argento
+ 309-1 color



Buio: Luna Argento
+ 550-3 color



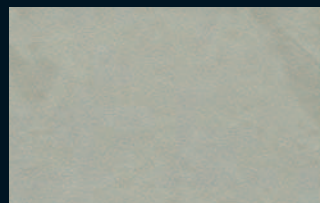
Peltro: Luna Argento
+ 328 - 2 color



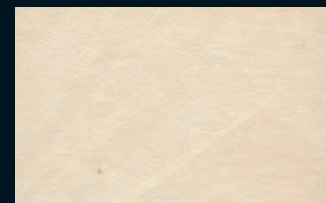
Grigio: Luna Argento
+ 328-1/2 color



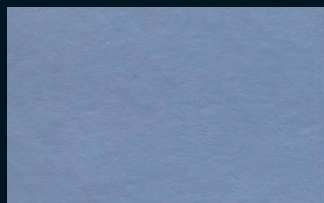
Terra: Luna Argento
+ 324-2 color + 329-3 color



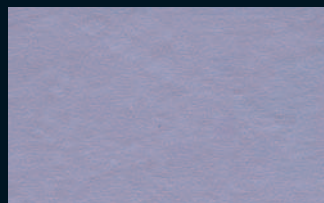
Ombra: Luna Argento
+ 323-1 color + 329-1 color



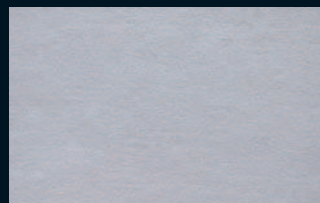
Spiaggia: Luna Argento
+ 316 - 1 color



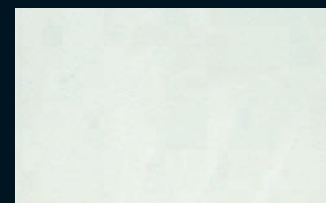
Provenza: Luna Argento
+ 329-3 color + 315-1 color



Lilla: Luna Argento
+ 329-2 color

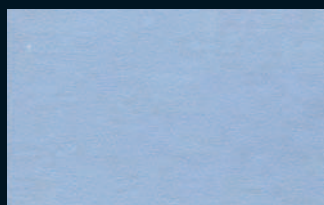


Crocus: Luna Argento
+ 329-1/2 color

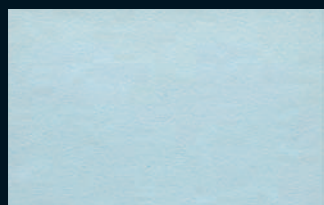


Iceberg: Luna Argento
+ 310 - 2 color

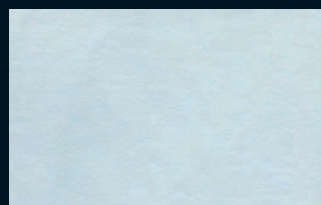
Tutti i colori riprodotti sono da ritenersi puramente indicativi
All colors reproduced in this shade are indicative



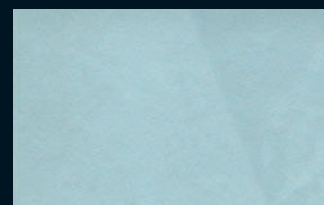
Ortensia: Luna Argento
+ 330-2 color + 329-1 color



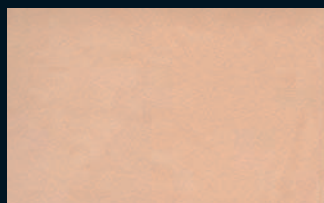
Celeste: Luna Argento
+ 330-1/2 color



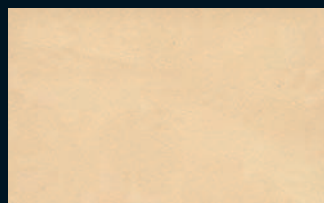
Mattino: Luna Argento
+ 308-1/2 color



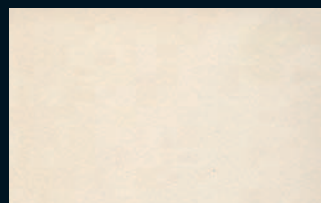
Maldive: Luna Argento
+ 330-1 color + 327-1/2 color



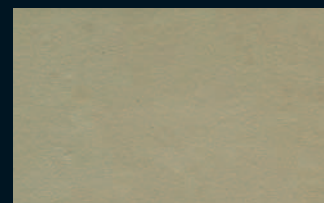
Siena: Luna Argento
+ 326-1 color



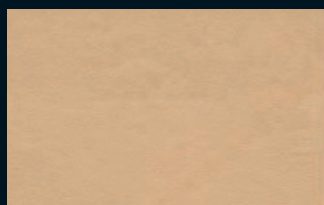
Pelle: Luna Argento
+ 329-3 color + 315-1 color



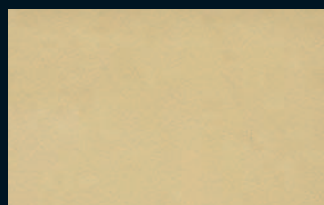
Organza: Luna Argento
+ 305-1/2 color



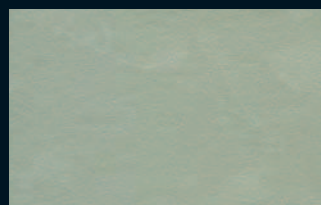
Nocciola: Luna Argento
+ 544-1 color



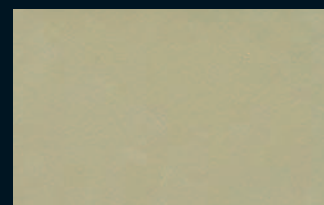
Avana: Luna Argento
+ 325-3 color + 324-1 color



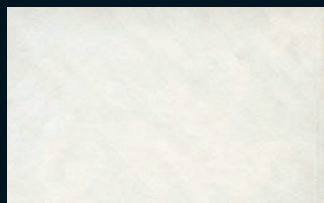
Biscotto: Luna Argento
+ 324-1 color + 325-1 color



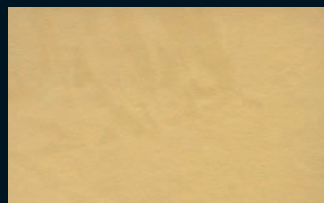
Creta: Luna Argento
+ 325-2 color + 308-1 color



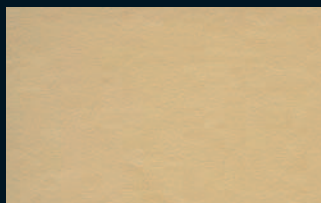
Savana: Luna Argento
+ 302-3 color + 325-1 color



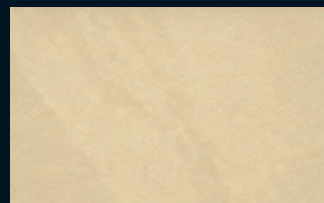
Acqua: Luna Argento
+ 307-1 color



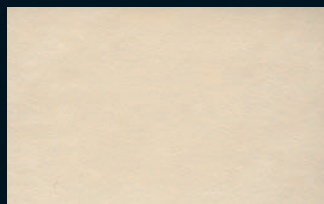
Canarino: Luna Argento
+ 537-1 color



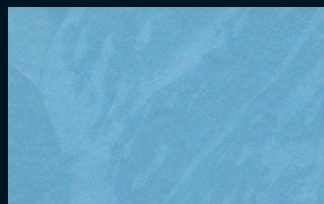
Frassino: Luna Argento
+ 324-2 color



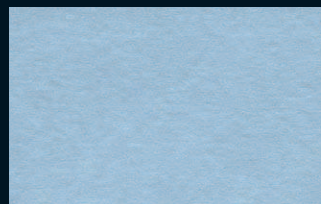
Spumante: Luna Argento
+ 323-1/2 color



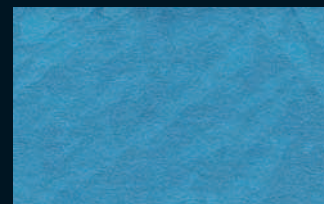
Penna: Luna Argento
+ 303-1 color



Ionio: Luna Argento
+ 547-1 color + 330-1 color



Marina: Luna Argento
+ 308-1 color + 315-1 color



Lario: Luna Argento
+ 548-1/2 color + 550-1/2 color

LUNA

Informazioni tecniche

LUNA è una velatura decorativa acrilica a base d'acqua, proposta nelle varianti LUNA ORO e LUNA ARGENTO.

Il prodotto, una volta asciugato, è perfettamente lavabile, non serve cerare.

PREPARAZIONE

Per ottenere l'effetto finale satinato/lucido di LUNA, occorre preparare la parete con lo stucco riempitivo PRIMA MANO ORO se si usa LUNA ORO oppure PRIMA MANO ARGENTO se si usa LUNA ARGENTO.

Scelta la tonalità dalla Cartella Colori, utilizzare, per colorare PRIMA MANO, la stessa quantità di colorante COLOR occorrente per ottenere il colore scelto LUNA.

Stendere uno o più strati di PRIMA MANO fino ad ottenere una superficie liscia ed omogenea. Quando lo stucco PRIMA MANO è ben asciutto (dopo circa 2-3 ore), applicare uno strato di LUNA a rasare con l'apposito frattazzo, quindi lasciare ossidare per circa 2 minuti.

Una volta ossidato lisciare a frattazzo scarico con spatolate incrociate e irregolari, fino ad ottenere l'effetto desiderato.

ATTREZZI

Spatola Inox / Frattazzo in P.V.C.

CONFEZIONI

Latte da 2- 4 lt

RESA

PRIMA MANO: 4 lt = 18/25 mq ca.

LUNA: 1 lt = 8/10 mq ca.

Made in Italy 100%

Technical information

LUNA, is a washable acrylic water based, it is proposed in the variants LUNA ARGENTO (SILVER) and LUNA ORO (GOLD).

LUNA once dried, is a perfectly washable product and it is not necessary to wax.

PREPARATION

To obtain the final shining effect of LUNA, you have to prepare the wall with the plaster PRIMA MANO ORO (GOLD) if you use LUNA ORO (GOLD) or PRIMA MANO ARGENTO (SILVER) if you use LUNA ARGENTO (SILVER).

Colour the plaster PRIMA MANO with the same quantity of COLOR selected to colour LUNA.

Apply one or more coats of PRIMA MANO until to obtain a smooth and homogeneous surface. When PRIMA MANO is well dried (after about 2-3 hours), apply a layer of LUNA to smooth with the suitable spatula made in PVC, then let it oxide for about 2 minutes.

Once oxidized, smooth with the spatula lightened with crossed irregular spatulated, until to obtain the wished effect.

TOOLS

Spatula Inox - Spatula in P.V.C.

PACKAGES

Cans 2 - 4 lt

YIELD

PRIMA MANO: 4 lt = 18/25 sqm about

LUNA: 1 lt = 8/10 sqm about

Made in Italy 100%