

JOHN CRYSTAL

La decorazione murale JOHN CRYSTAL è stata studiata per creare un effetto elegante particolarmente adatto in ambienti giovani e moderni.

La collezione JOHN CRYSTAL è composta da una base che viene colorata e che applicata sulla parete dona un effetto di colore intenso; la finitura opaca o lucida viene ottenuta utilizzando il prodotto JOHN CRYSTAL Opaco o JOHN CRYSTAL Lucido, preventivamente colorato con lo stesso dosaggio di COLOR.

L'assoluta lavabilità rende la finitura JOHN CRYSTAL particolarmente pratica e innovativa.

JOHN CRYSTAL is a wall decoration studied to create a chic effect particularly suitable for young and modern furnishing.

JOHN CRYSTAL is a collection without compromises, using actual colours, with Mat or Gloss finishing, completely washable that makes it practice and innovative.



John Crystal base
+ lucido 548-2 color

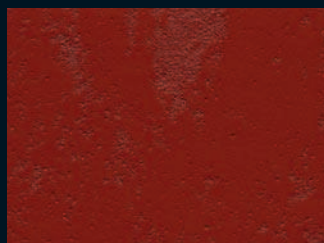


John Crystal base
+ lucido 544-2 color

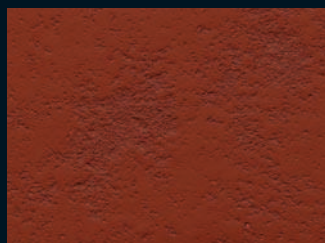


John Crystal base
+ lucido 546-2 color

Tutti i colori riprodotti sono da ritenersi puramente indicativi
All colors reproduced in this shade are indicative



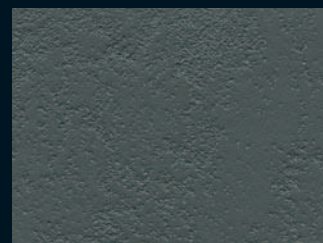
John Crystal base
+ lucido 543-2 color



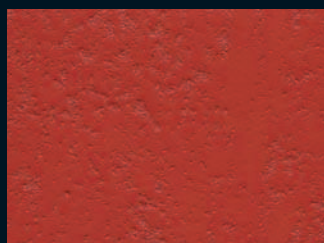
John Crystal base
+ opaco 543-2 color



John Crystal base
+ lucido 536-2 color



John Crystal base
+ opaco 536-2 color



John Crystal base
+ lucido 549-2 color
+ 542-1 color



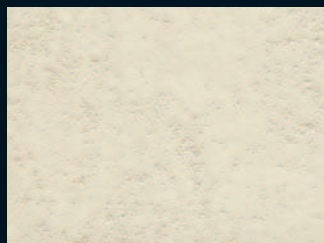
John Crystal base
+ opaco 549-2 color
+ 542-1 color



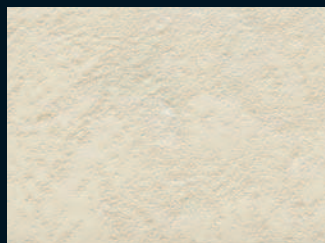
John Crystal base
+ lucido 549-2 color
+ 315-1 color



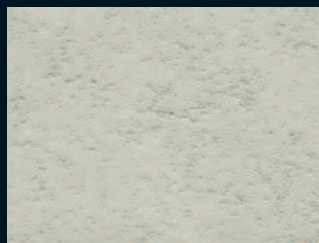
John Crystal base
+ opaco 549-2 color
+ 315-1 color



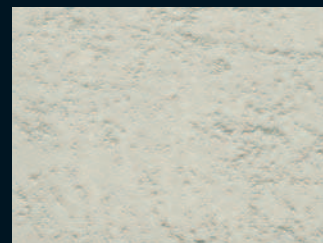
John Crystal base
+ lucido 543-2 color
+ 316-1 color



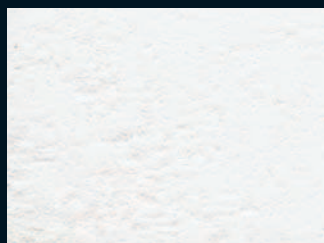
John Crystal base
+ opaco 543-2 color
+ 316-1 color



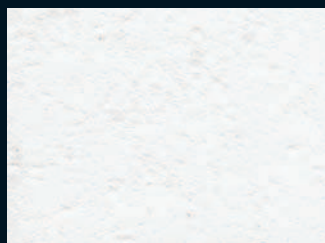
John Crystal base
+ lucido 549-2 color
+ 302-2 color



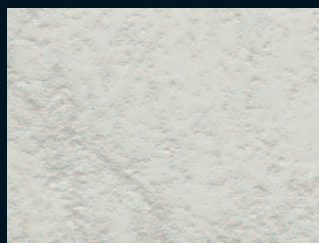
John Crystal base
+ opaco 549-2 color
+ 302-2 color



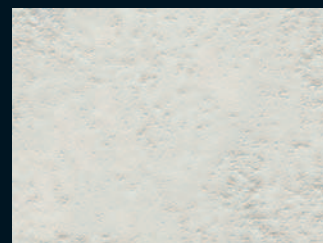
John Crystal base
+ lucido 549-2 color



John Crystal base
+ opaco 549-2 color

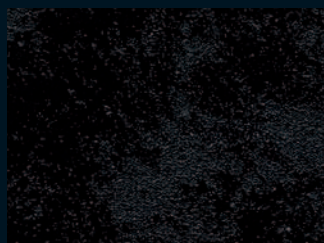


John Crystal base
+ lucido 549-2 color
+ 319-2 color

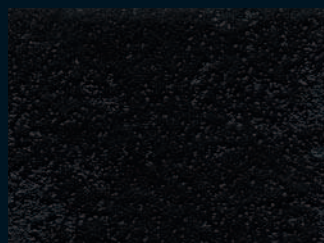


John Crystal base
+ opaco 549-2 color
+ 319-2 color

Tutti i colori riprodotti sono da ritenersi puramente indicativi
All colors reproduced in this shade are indicative



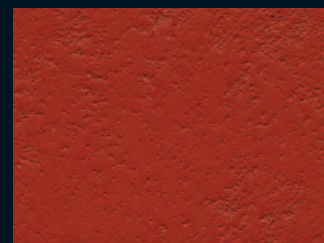
John Crystal base
+ lucido 550-2 color



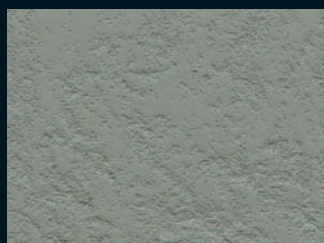
John Crystal base
+ opaco 550-2 color



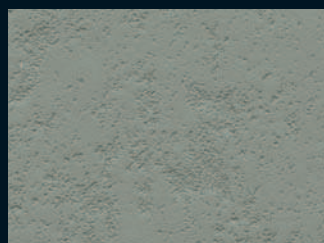
John Crystal base
+ lucido 542-2 color



John Crystal base
+ opaco 542-2 color



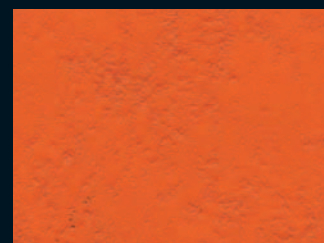
John Crystal base
+ lucido 549-2 color
+ 536-1 color



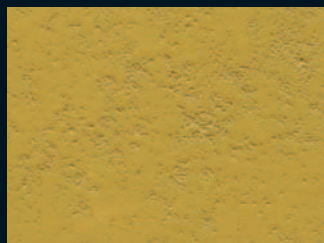
John Crystal base
+ opaco 549-2 color
+ 536-1 color



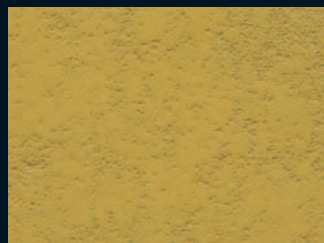
John Crystal base
+ lucido 540-2 color



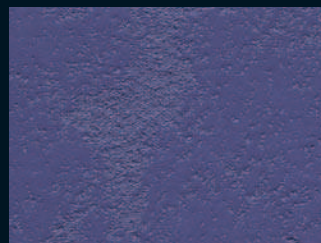
John Crystal base
+ opaco 540-2 color



John Crystal base
+ lucido 538-2 color
+ 307-3 color



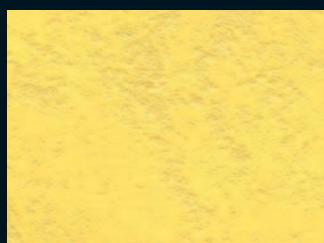
John Crystal base
+ opaco 538-2 color
+ 307-3 color



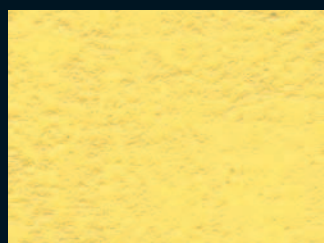
John Crystal base
+ lucido 549-1 color
+ 329-5 color



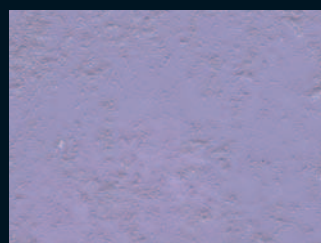
John Crystal base
+ opaco 549-1 color
+ 329-5 color



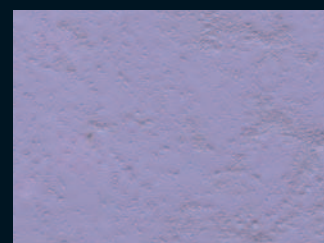
John Crystal base
+ lucido 549-2 color
+ 323-2 color



John Crystal base
+ opaco 549-2 color
+ 323-2 color



John Crystal base
+ lucido 549-2 color
+ 329-1 color



John Crystal base
+ opaco 549-2 color
+ 329-1 color

Tutti i colori riprodotti sono da ritenersi puramente indicativi

All colors reproduced in this shade are indicative



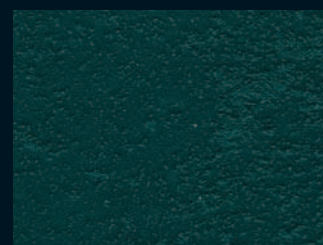
John Crystal base
+ lucido 548-2 color



John Crystal base
+ opaco 548-2 color



John Crystal base
+ lucido 546-2 color



John Crystal base
+ opaco 546-2 color



John Crystal base
+ lucido 544-2 color



John Crystal base
+ opaco 544-2 color



John Crystal base
+ lucido 549-1 color
+ 327-5 color



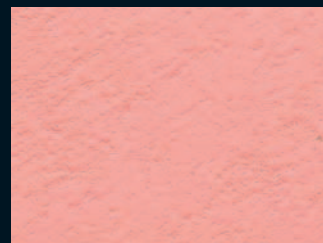
John Crystal base
+ opaco 549-1 color
+ 327-5 color



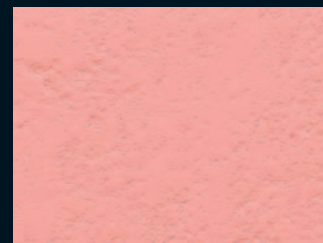
John Crystal base
+ lucido 549-2 color
+ 544-1 color



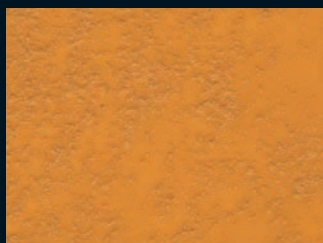
John Crystal base
+ opaco 549-2 color
+ 544-1 color



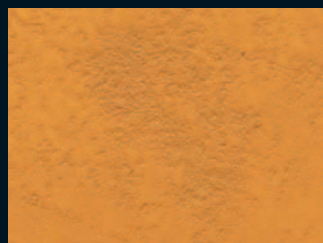
John Crystal base
+ lucido 549-2 color
+ 318-3 color



John Crystal base
+ opaco 549-2 color
+ 318-3 color



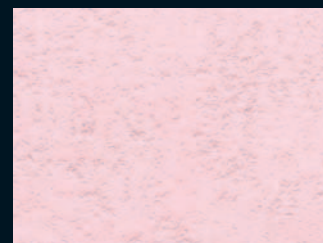
John Crystal base
+ lucido 538-2 color



John Crystal base
+ opaco 538-2 color



John Crystal base
+ lucido 549-2 color
+ 305-1 color



John Crystal base
+ opaco 549-2 color
+ 305-1 color

JOHN CRYSTAL

Informazioni tecniche

La collezione JOHN CRYSTAL è composta da JOHN CRYSTAL Base, una pittura a base acquosa semicoprente, che contiene quarzo naturale, JOHN CRYSTAL Opaco e JOHN CRYSTAL Lucido.

Le finiture JOHN CRYSTAL Opaco-Lucido sono caratterizzate da un elevato residuo secco, da un'ottima resistenza, nonché da un sofisticato aspetto estetico finale.

Altra particolarità di JOHN CRYSTAL Opaco-Lucido è quella di avere un pH neutro.

PREPARAZIONE

I supporti devono essere lisci, asciutti e privi di polvere. Stuccare e carteggiare dove è necessario, quindi si consiglia di applicare una mano di fissativo MANUPRIMER. Stendere una mano di fondo BASE DECOR con un rullo o con un pennello.

Quando BASE DECOR è asciugato, colorare JOHN CRYSTAL Base con i coloranti COLOR, secondo le indicazioni della Cartella Colori. Miscelare accuratamente e applicare il prodotto con il pennello a movimenti incrociati. Durante l'applicazione si consiglia di miscelare frequentemente il prodotto.

Quando il JOHN CRYSTAL Base è asciugato, usare la stessa quantità di COLOR per colorare JOHN CRYSTAL Opaco o Lucido, quindi miscelare accuratamente e applicare con il pennello a movimenti incrociati. Questo secondo passaggio è necessario per dare l'effetto finale opaco o lucido, ma anche per rendere il prodotto estremamente resistente e lavabile.

ATTREZZO

Pennello

CONFEZIONI

Latte da lt 2- lt 4

RESA

Base Decor/Manuprimer: 1 lt = 8-10 mq ca.

John Crystal Base: 1 lt = 7-9 mq ca.

John Crystal Opaco/Lucido: 1 lt = 8-10 mq ca.

LAVABILITÀ

Ottima: ad essiccazione completa (dopo 7 gg ca.)

Made in Italy 100%

Technical information

The JOHN CRYSTAL collection is composed of JOHN CRYSTAL Base, a wall decoration semi-cover water based, containing selected natural quartz, and of water based finishing JOHN CRYSTAL Mat or JOHN CRYSTAL Gloss.

The finishing John Crystal is completely washable, practice and innovative.

PREPARATION

Supports must be smooth, dry and without dust. Plaster over and sand, when required, then it is recommendend to apply a coat of fixative MANUPRIMER.

Apply a coat of BASE DECOR with a roll or a brush.

When BASE DECOR is dry, colour JOHN CRYSTAL Base with the colourants COLOR, putting into the can the right quantity indicated on Colour Book. Then carefully blend and apply the product by brush with crossed movements. It is recommended mixing frequently the product during application.

When JOHN CRYSTAL Base is dry, put the same quantity of colour COLOR used to prepare JOHN CRYSTAL Base into the can of JOHN CRYSTAL Mat or Gloss, mix carefully and apply the product by brush with crossed movements.

TOOLS

Brush

PACKAGES

Cans lt 2- lt 4

YIELD

Base Decor/Manuprimer: 1 lt = 8-10 mq about

John Crystal Base: 1 lt = 7-9 mq about

John Crystal Opaco/Lucido: 1 lt = 8-10 mq about

WASHABLE

Excellent: to a complete drying process (after 7 days from application)

Made in Italy 100%